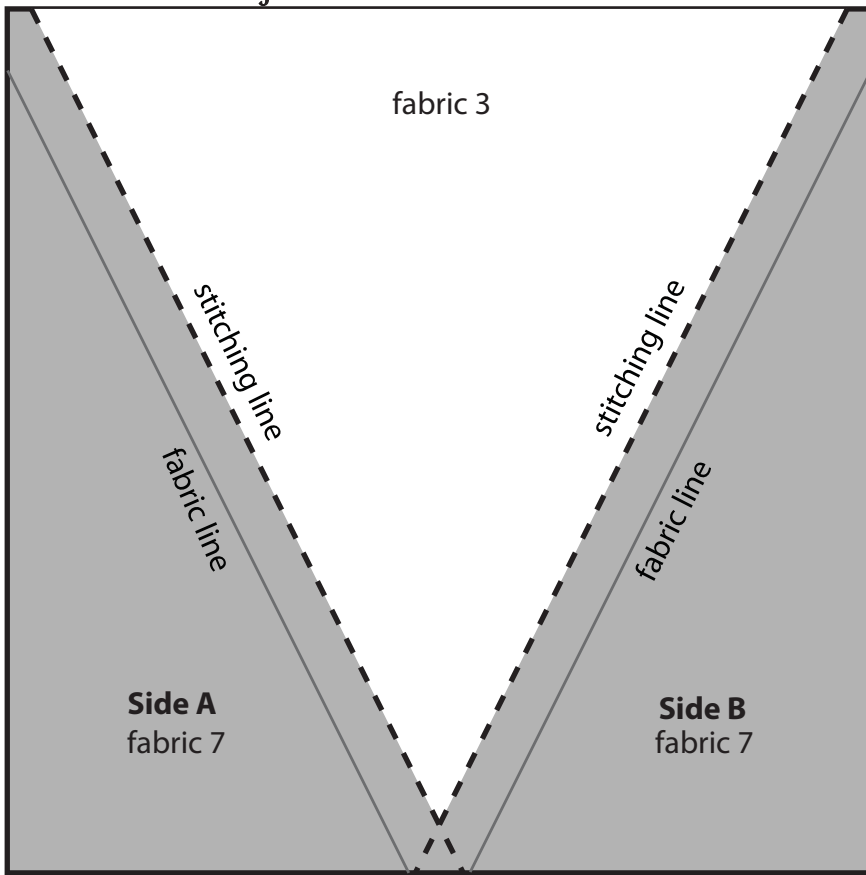
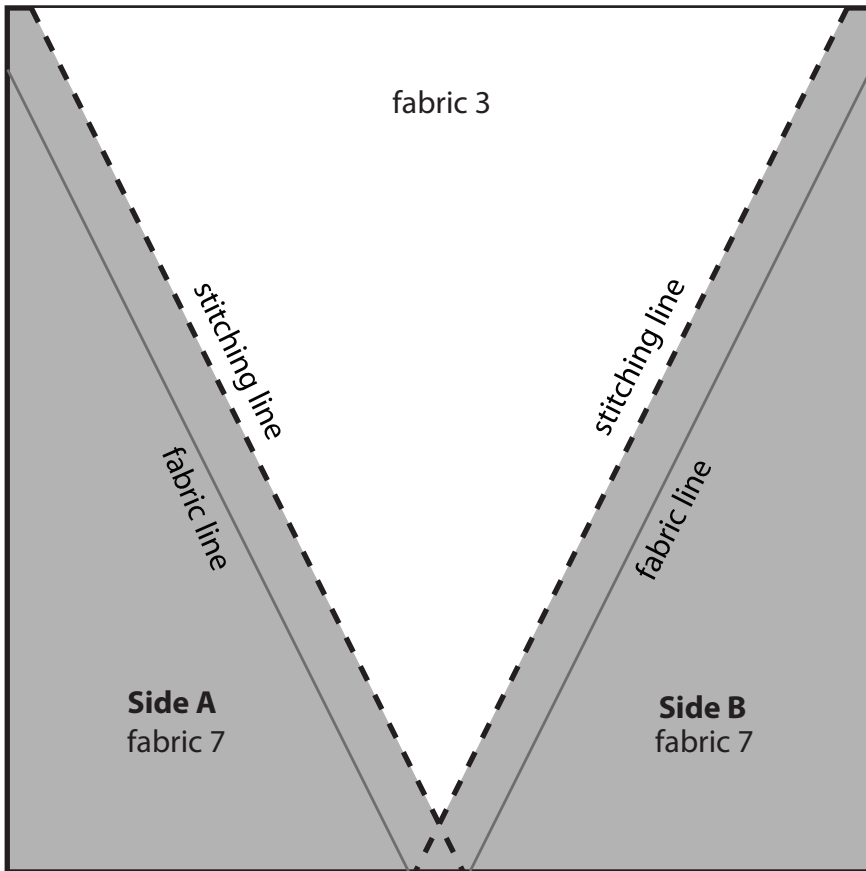


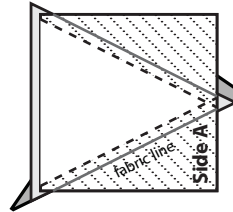
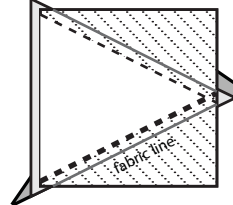
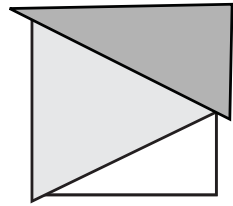
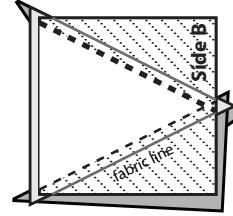
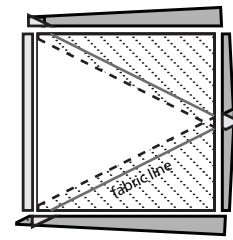
O-Block Template ~ Contessa by Wing and a Prayer Design



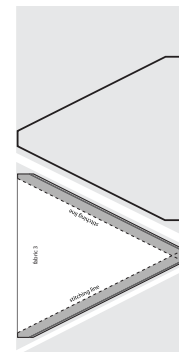
trim line



trim line



<p>With fabric right side up cut triangles for side A</p>	<p>With fabric right side up cut triangles for side B</p>
---	---



Following the fabric line, fold the shaded areas towards the backside of the template.
 Cut 4 ~ fabric 3 triangles using the paper template as a guide, flipping template after each cut.

Step 1: With printed side facing you hold template up to the light place the wrong side of the fabric 3 triangle next to the template. Place pin in center of template to secure.

Step 2: With right sides together, place side-A triangles on fabric 3 aligning bias edges on the fabric line. Secure with a pin. Place fabric next to feed dogs and stitch through paper and fabric on designed stitching line. Flip open and press.

Step 3: Repeat step 2 with side-B triangles.

Step 4: Flip over. Trim on outer line to 4 1/2" x 4 1/2". Remove paper.

REVISED
11/26/12